

Hans-Peter Ludwig

CONTACT AT 49.6° The Architectural Plan Of Giza



Oh Egypt!

The pyramids of Giza are tombs - planned and built by the three pharaohs Cheops, Chephren and Mykerinos - so the archaeologists tell us. However, an existing overall plan presupposes that there must be a clear authorship: a plan, an architect! Where did the idea and the wisdom come from to be able to realize such a wonder of the world? The trail leads to Thoth, the ancient Egyptian deity of all-science. Whether hieroglyphic script, calendar, mathematics, medicine, architecture, or astronomy - Thoth is always the universal author! As the author of the Book of the Dead, he is the founder of the ancient Egyptian star religion, the concept of the afterlife and the cosmos. Thoth brought the stars of heaven to the earth of Egypt, and by that I don't just mean the belt stars of Orion in (near-perfect) alignment with the three pyramids of Giza, as discovered by Robert Bauval.

Fig. 1: The ancient Egyptian deity Thoth - Lord of Wisdom

Oh Egypt!



Fig.2: The Valley Temple, the Sphinx and the Great Pyramid, 21.3.1999, author

All ancient temples and pyramid centers took their star position along the Nile a long time ago. "On a large scale, as well as on a small scale," Thoth used to say. It is no secret that Egypt is the mirror of heaven, the mirror of the hereafter. Nowhere else in the world have people been more concerned with death than with life itself. What could be more obvious than to go to Egypt to get in touch with his ancient soul: at 49.6 degrees! What is this special angle all about? The higher mathematics and wisdom of Thoth is difficult to fathom knowing well, because there is more at stake here: the blueprint of man, the blueprint of his soul. This "cosmic hyperlink" of humanity to higher planes of creation is particularly evident in the most striking monuments of prehistoric times, which are connected by a mysterious plan. Matter actually plays an elementary role in this. This kind of divine connection is to be understood multidimensionally, just as everything is connected and interwoven. C. G. Jung called it the "collective unconscious" and Rupert Sheldrake speaks of "morphogenetic fields". The problem begins with how do we even know that we are thinking our own thoughts - and not those of others? From a neuro-psychological point of view, "self-awareness" - to make one's thoughts, feelings or even actions one's own - must be understood as a special mental ability - even if it may seem self-evident to us. While neurologists and philosophers investigate and question this complexity of the human mind, it has been used and used by religions all over the world for a long time.

Our context of dealing with mediumistic or even out-of-body experiences determines their classification just as much as our own mental state of health. But how can we judge it ourselves? Experiences of the "third or fourth kind" may convince us of the existence of higher dimensions or confuse us altogether. In any case, they go to the limits of the human mind. I could elaborate here on a number of my own experiences that have accompanied and guided me to this point as part of my "soul plan". From time to time I will go into the insights and experiences as I wrote them down in my "diary" "THE SECRET OF YOUR LIFE". But this is about something else: a clear, mathematical-geometric proof that we are really dealing with an all-encompassing, divine plan. And there is one who perfectly masters this combination of the highest science and spirituality: Thoth.

The human dimension φ



Fig.3: "Pentagram – Man – Pyramid", 1999, author

The fact that a "soul architecture" actually exists on both the spiritual and the material level may not necessarily come as a surprise. After all, humans have soul, mind and body and have always built temples in advanced cultures in order to make contact with higher dimensions. But where did and does this knowledge about God and the "gods", about the blueprint, come from and what is the intention of this contact? To seek help and assistance to gain greater wisdom in order to finally recognize the truth: *"Aliens are our creators and are concerned about the development of humanity"*? The best means and tool that one can imagine to establish a soul contact is actually constructed and constituted in the same way as the human being and his consciousness itself! Socrates put it in a nutshell: *"Man is the measure of all things!"*. And that this measure is the "golden ratio" ($1/\text{PHI}$ or $\text{PHI} - 1 = 0.618\dots$), we know at least since Leonardo da Vinci. In his famous drawing of the "divine proportions" of man, this ingenious insight is expressed.

The human being is a pentagram with five ends of the body and five senses. The "diameter" of the pentagram is exactly ϕ ($\text{PHI} = 1.618\dots$), while its side length corresponds to the number 1. The side length of a "star point" is then exactly the "golden ratio" $\phi - 1$ or the quotient of 1 and ϕ ($1/\text{PHI} = 0.618\dots$).

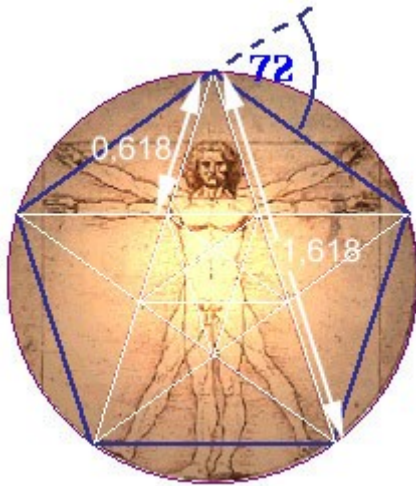


Fig. 4: "Golden Ratio and Pentagram", 1509/1999 – Leonardo da Vinci/Author

It may be surprising that the oldest holy places were built according to the divine "human measure PHI". Cosmic spiritual forces that act on all levels of the human being via a special PHI architecture – and vice versa? By the way, the processing of one's own, accumulated soul garbage - called "fate" or "karma" - is also part of it! But more about that later in Giza! I suggest we go to Mars first. There is supposedly also a "Great Pyramid" there!

The Cydonia Message e/π



Fig. 5: "Mars Express" – ESA Mars Mission 2003 – <http://www.ESA.de>

On August 27, 2003, Mars will approach Earth as it did 6,000 years ago: to a distance of only 56 million kilometers. It will then shine brighter in the sky than the brightest star, Sirius, for the next few months. Reason enough for the space agencies to undertake three Mars missions in June and July. NASA is sending two robots on its way with "Mars 2003 Rover I and II", the European Space Agency ESA will explore Mars for the first time with the "Mars Express" and will also send the "Beagle 2" lander into the race.

In 1976, it was the Mars probes "Viking I and II" that were to investigate the red planet in more detail. While the landers took soil samples and examined them for traces of life, the orbiters photographed the surface of Mars with a total of 300,000 images. However, the subsequent analysis of the laboratory results was disappointing despite the very successful Mars mission: no traces of life on Mars! And the 240,000 unanalysed images would have been forgotten forever in the NASA archive if Vincent DiPietro had not noticed an image of the Cydonia region from 31.07.1976 - the Mars Viking Frame 35A72. The "Face" and the "Pyramid City" were discovered ["Unusual Martian Surface-features", Vincent DiPietro and Gregory Molenaar, 1982, Glenn Dale] and are still causing discussion today about a Martian civilization that existed a long time ago.



Fig. 6: Cydonia: Martian face and D&M pyramid, 2002 - "Mars Odyssey 2001", <http://themis.la.asu.edu/zoom-20020413a.html>

In the meantime, "Mars Global Surveyor" (MGS) and "Mars Odyssey 2001" (<http://mars.jpl.nasa.gov/odyssey/>) with THEMIS (Thermal Emission Imaging System) provide Mars images in much better resolution, but unfortunately not always for the benefit of the general public. It has already been proven several times that the original quality of the Cydonia images was reduced to a fraction [Magazin2000 plus reported on the "Mars Face Scandal", 1998 6/7, No. 128/129].



Fig. 7: "It doesn't get any better than this?" The face of Mars from 1976 to 2002 - <http://www.xfacts.com>

Of particular importance is the "D&M" pyramid south of the face of Mars – so named after its discoverers DiPietro and Molenaar. The striking geometry of this pyramid was studied in detail by the American cartography expert Erol Torun. His result shows a striking, mathematical-geometric relationship model with a special angle of 49.6 degrees: "The D&M Pyramid of Mars, 1996", <http://www.well.com/user/etorun/pyramid.html>). This angle would be meaningless – seen in itself – if its radians **were** $e/\pi = 0.865...$ (e = Euler's number 2.718...; $\pi = 3.14159...$) would not also appear several times in the Cydonia geometry. This makes e/π the "Message of Cydonia".

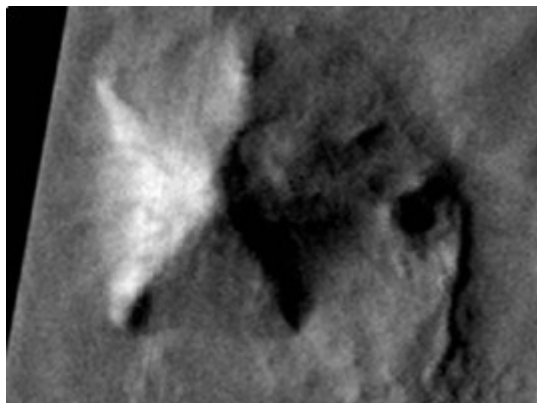
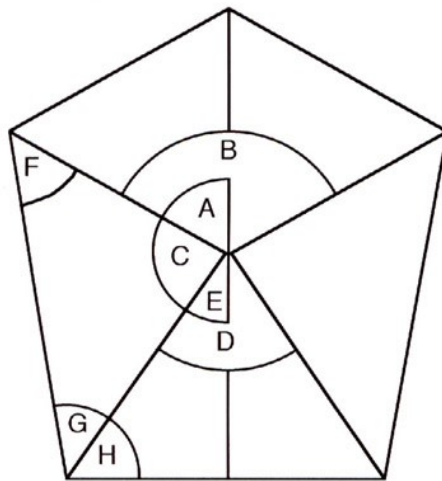


Fig. 8: Cydonia: D&M pyramid at 40.7 N 9.8 W - NASA/JPL/Arizona State University



Internal model of the D&M Pyramid developed by Torun.

Fig. 9: Geometry of the D&M pyramid: F=49.6 degrees – Erol Torun: <http://www.well.com/user/etorun/pyramid.html>

	Angles		Angle Ratios	Trigonometric Functions
	Degrees	Radians		
A:	60	$\pi/3$	$C/A = \sqrt{2}$	$\tan A = \sqrt{3}$
B:	120	$2\pi/3$	$B/D = \sqrt{3}$	$\tan B = -\sqrt{3}$
C:	85.3	$C/F = \sqrt{3}$	$\sin A = \sqrt{3}/2$	
D:	69.4	$e/\sqrt{5}$	$A/D = e/\pi$	$\sin B = \sqrt{3}/2$
E:	34.7	$C/D = e/\sqrt{5}$	$\tan F = \pi/e$	
F:	49.6	e/π	$A/F = e/\sqrt{5}$	$\cos E = \sqrt{5}/e$
G:	45.1	$B/C = \pi/\sqrt{5}$	$\sin G = \sqrt{5}/\pi$	
H:	55.3	$D/F = \pi/\sqrt{5}$ $H/G = e/\sqrt{5}$		

Fig. 10: "Relationship Sodell of the D&M Pyramid and Cydonias" – Torun, Carlotta: "THE MARTIAN ENIGMAS"

But that's not all: "Sir Norman Loker, Britain's great astronomer of the 19th century, made calculations about Stonehenge and derived the azimuth of the said escape. With an accuracy of less than 0.2 arc seconds, it is identical to the crucial angle on Cydonia." [Richard C. Hoagland in "THE MONUMENTS OF MARS", 1992].

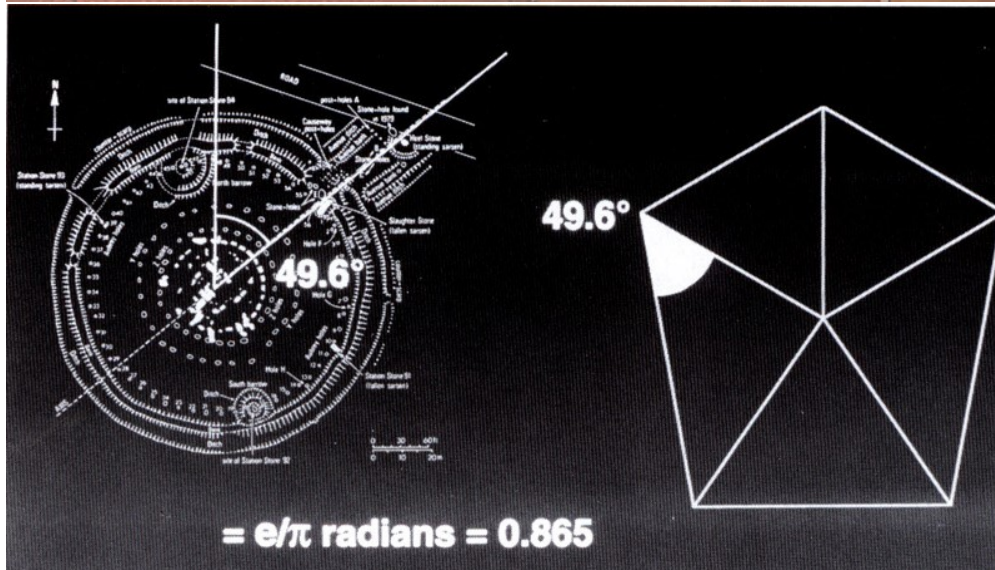


Fig. 11: Stonehenge & "the message of Cydonia" – Richard C. Hoagland: "THE MONUMENTS OF MARS"

A stone pyramid on Mars and a stone circle in Stonehenge, both of which are aligned according to such a special angle of 49.60 or its radians $e/\pi = 0.865$, may be connected by a coincidental coincidence. After all, you always find something that fits together. But what if this "message of Cydonia" is also waiting to be discovered in such an extraordinary architectural plan as Giza? So let's go to Egypt!

Giza, Fibonacci and e/π

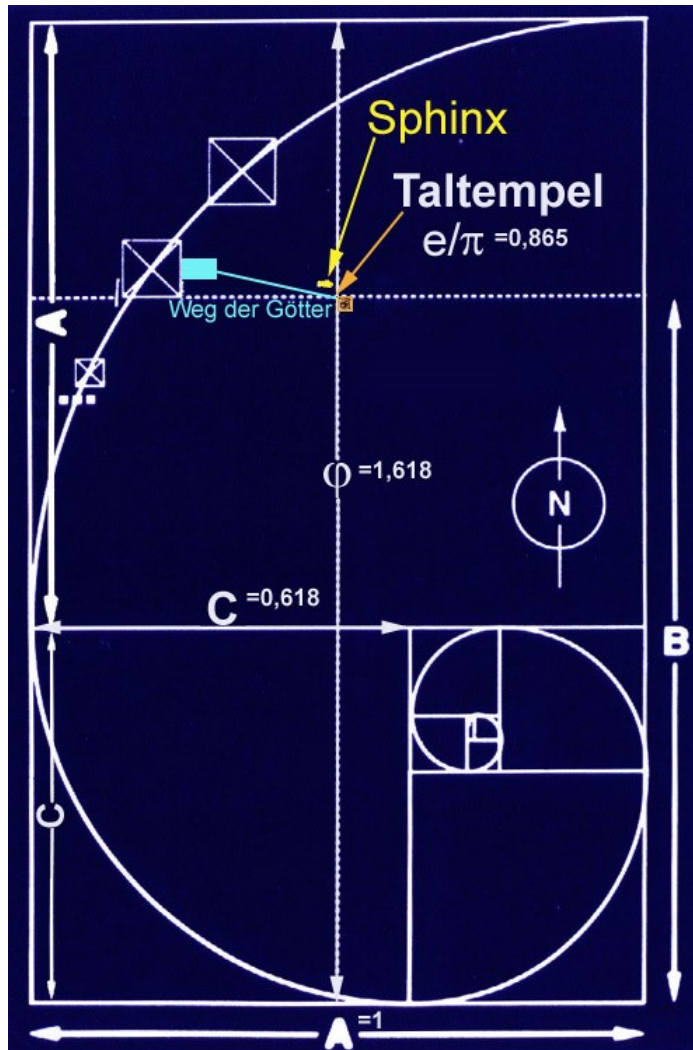


Fig. 12: World Exclusive: "The Valley Temple at Cydonia Position e/π " – Author, Fibonacci Diagram by McCullum

The Fibonacci spiral arises geometrically from the series $x_n = x_{n-2} + x_{n-1}$, so the result of a number of the series arises from the sum of the two preceding numbers, the so-called Fibonacci series: 1, 2, 3, 5, 8, 13, 21, 34, 55, The quotient of two consecutive numbers in the series - x_{n-2}/x_{n-1} - approaches the "golden ratio" $1/\phi$ ($1/\text{PHI} = 0.618...$) or with the reciprocal $x_{n-1}/x_{n-2} = \phi$ ($\text{PHI} = 1.618...$). As we can see from the diagram, the positions of the three pyramids are aligned according to the "golden ratio", with the granite temple (valley temple of "Chephren") occupying the "cydonia position" e/π (quotient A/B), and this, as we will see, is far from another coincidence. As we can already clearly see, there is a comprehensive overall construction plan for Giza. Why should a pharaoh like Cheops include the other, non-existent pyramids in a Fibonacci spiral for his tomb? He didn't either! In fact, it was Thoth, the omniscient architect and master of Giza! And where PHI is, the pentagram can't be far away. So let's take a closer look at the plateau, its pyramids and temples!

The Giza ϕ Pentagram

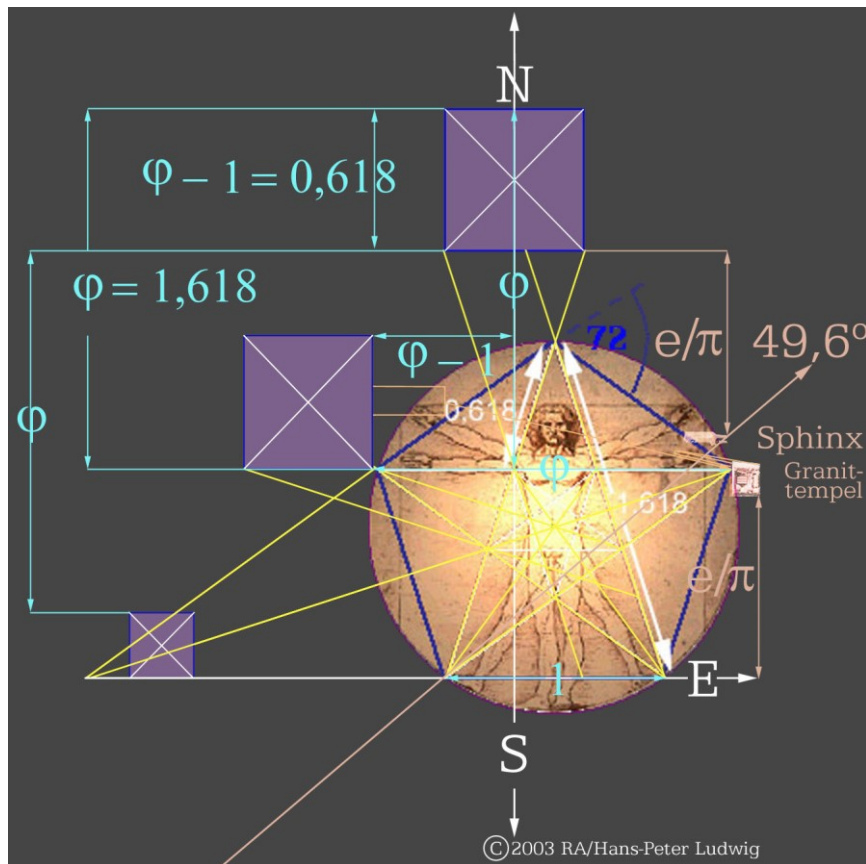


Fig.13: World Exclusive: "The Giza Pentagon and the Cydonia Key e/π " – Author

If we now take into account that the Great Pyramid of Giza also corresponds to the "Golden Ratio", we get another key to the Giza architectural plan. The dimensions and positions of the three pyramids necessarily result in the "Giza pentagram" of base length = 1, whereby the Sphinx and the Granite Temple (in the right, eastern part of the picture) play a special role. Starting from the southern base of the Great Pyramid ("Cheops" pyramid in the north) as well as from the southern base of the Pyramid of Isis ("Mykerinos" pyramid in the south), the same measure of length e/π (=0.865) points to the Sphinx and to the Valley Temple (granite temple). The quotient e/π is the "Cydonia key", which marks the two entrances to the "Hall of Records": below the left front paw of the Sphinx and below the granite temple! In addition, the "Cydonia angle" of 49.6 ° (radians = e/π) points from the southwestern base point of the Giza pentagram to the left front paw of the Sphinx, which is also the official entrance.

"The official, underground path begins at the entrance of the left front paw of the Sphinx in an arc over the right front paw. However, this access does not lead directly to the hall, but to the connecting chamber below the granite temple. The entrance to the Sphinx is partially buried and blocked, so the Hall of Records is actually easiest to reach directly from the Granite Temple."
["THE SECRET OF YOUR LIFE – End and Beginning – ACCESS TO THE HALL", 2001, author]

It was Thoth himself who, after pointing his finger at the Orion Nebula, gave me more details about the "Hall of Records":

"The entrance is below the right front paw of the Sphinx. Seen from the front! So actually his left.

...“ [”THE SECRET OF YOUR LIFE – Oneness 10 – THE GODS RETURN”, 2000, author].

The pentagram size ϕ and the pentagram radius e/π are the determining units of measurement of the comprehensive architectural plan of Giza, which in turn corresponds to the "blueprint" of man in his "divine proportions". We remember: the human being is also a pentagram with its five body ends (hands, feet and head) and its five senses (sight, hearing, touch, smell and taste). The relationships between ϕ and e/π become even clearer π in the following diagram.

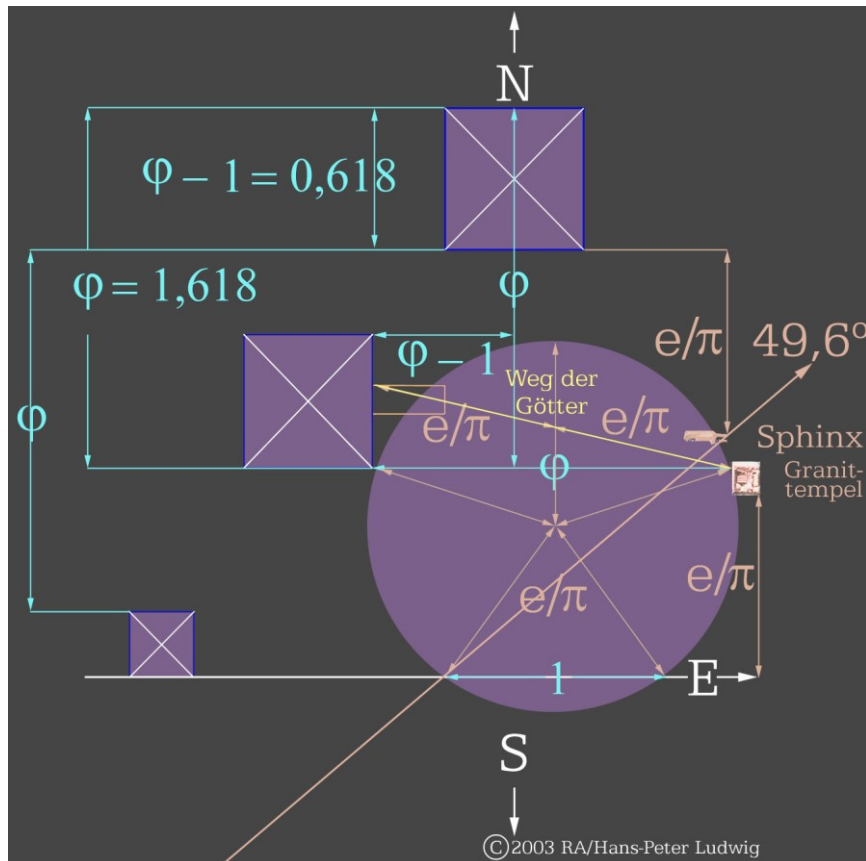


Fig.14: World Exclusive: "The Giza ϕ Pentagram and the Circle of Souls e/π " – Author

1. The all-determining unit of measurement of Giza is ϕ (PHI).
2. This unit of measurement in the form of the "golden ratio" ($\phi - 1$) corresponds to the base length of the Great Pyramid. The Great Pyramid itself was built by Thoth in the ϕ proportions. At half a base length = 1, the height of the side face is exactly = ϕ .

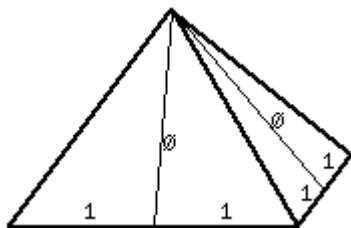


Fig.15: "Known ϕ proportions of the Great Pyramid"

3. From the pyramid dimensions, their positions and relations with each other as well as in particular to the valley temple (granite temple) we obtain the Giza pentagram of base length
4. The arc of the circle resulting from the pentagram has a radius **of e/π** .
5. The "Way of the Gods" extended from the valley temple up to the middle Osiris pyramid (pyramid of "Chephren") via the pre-temple to the pyramid base corresponds to the circle diameter **$2 e/\pi$** .
6. The ratio of the circumference of the Great Pyramid (Pyramid of "Cheops") to its height to its original top corresponds to that of the circumference of the circle to its radius = 2π . The "squaring of the circle", in turn, is also the "golden ratio" and its unit of measurement ϕ .
7. Just as the Great Pyramid defines a "squared" circle with five vertices (4 base corners + tip), the pentagram also defines a circle with five vertices. From the center of the circle, each pentagram vertex describes an angle of 72 degrees. In Egyptian mythology, it is the 72 followers of Seth with whom he outwitted his brother Osiris.
8. The shortest distance between the middle Pyramid of Osiris (Pyramid of "Chephren") and its Valley Temple (Granite Temple) is exactly ϕ . If you walk through the path over the center of the circle, the length corresponds exactly to twice the radius of the circle **$2 e/\pi$** . This, in turn, is also the length of the third and actually accessible connection between the valley temple and the pyramid: The "Path of the Gods" measures the exact diameter of the circle **$2 e/\pi$** . At half of the ascent = **e/π** , the north-pointing circle radius **e/π** is reached and at the same time halved at the intersection.
9. The distance between the southern base edge of the Great Pyramid (Pyramid of "Cheops") and the left front paw of the Sphinx is **e/π** . With the radians **e/π** we get an angle of **49.6°** , which leads from the left front paw exactly to the southwestern pentagram vertex. This vertex is located exactly on the southern baseline of the Pyramid of Isis (Pyramid of "Mykerinos"). The distance from this baseline to the valley temple (granite temple) is exactly **e/π** .
10. The overall plan of Giza shows the "Cydonia position" of the Valley Temple in the Fibonacci spiral: exactly **e/π** .

The Valley Temple and the Stargate



Fig.16: "Eye of Horus" - View from the Valley Temple to the Sphinx and Great Pyramid, 22.09.2000, author

Anyone who stands at the key point of Cydonia (e/π) - directly in the stargate of the valley temple to the path of the gods - and looks over the head of the Sphinx to the Great Pyramid, knows what happened to the top of the pyramid! After all, Thot's Great Pyramid is also called "the Eye of Horus", and ancient Egyptian history tells of Thoth retaining the 64th part of the Eye of Horus. It is the "Hall of Records", hidden in the desert sand!

Imagine that we are in the Valley Temple, the granite temple of Giza, and walk together to the "Star Gate" - the exit gate of the temple - via the ramp up to the "Way of the Gods". But wait! Before we go up, did you notice anything?

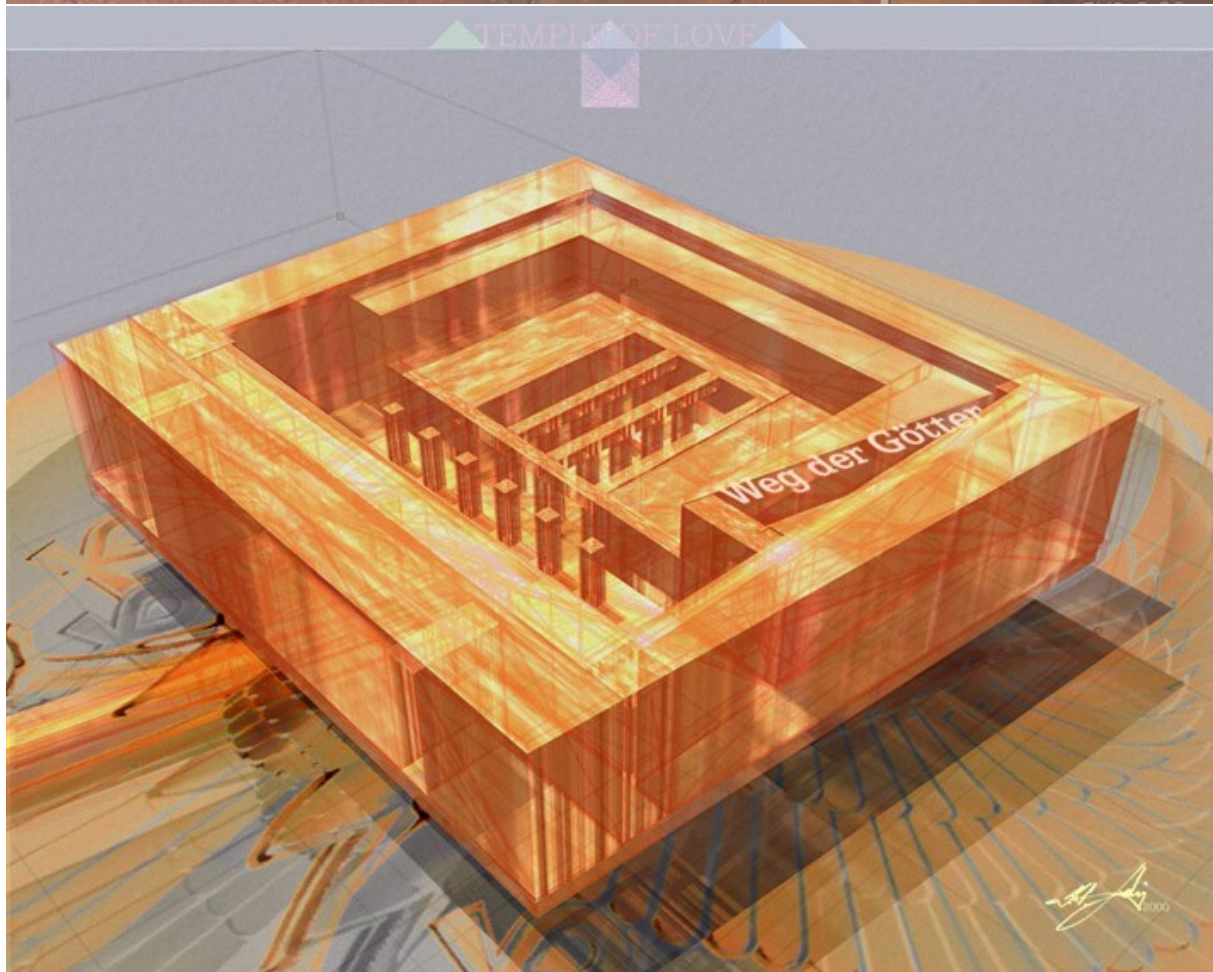


Fig. 17: The Granite Temple of Giza - "TEMPLE OF LOVE", 2000, author

The special route with its specific angle is built into the granite temple. Where else can you find that? But the Sphinx, as he now rises from the plateau on his right hand, exalted above all time, is already waiting for us. And of course the three pyramids! The "Path of the Gods" leads us straight up to the middle Osiris pyramid. And with the first step out of the stargate of the granite temple, we find ourselves in the soul circle of humanity. This is a very special moment and Thoth recorded it for us in his diary of our ceremony:

"Now I feel that I am doing everything right again. The shadows touch. Isis gives me the sign. Tuhut, the reporter of the dead, sets out to present his own report and that of Ra, to the Last Judgment, as a supplicant for all. This will be the most difficult negotiation ever.

I walk along the colonnade towards the exit to the Sphinx. I linger there for a moment. As if I'm waiting for the door that was there a long time ago to be opened. Then I go up the corridor to the place where there are two bay windows in the wall to the left and right of the corridor. Again a short break. As if two people will join us and accompany us. Continue along the path of the gods to the place where an archway must have been. Here, too, a short break.

Then finally up the path of the gods, looking at the middle pyramid. I realize that no tomb has ever been found in the middle pyramid because that's where judgment is held. Isis, Osiris and Nephthys are there. We walk the path to the place where it is not further developed. We stop there again for a moment and I hand over the report to our hearts. Led by Isis all the time." ["THE SECRET OF YOUR LIFE - Maat 11 - OUR FOURTH AND DECISIVE DAY - Friday, 22.09.2000", 2000, TH]

16

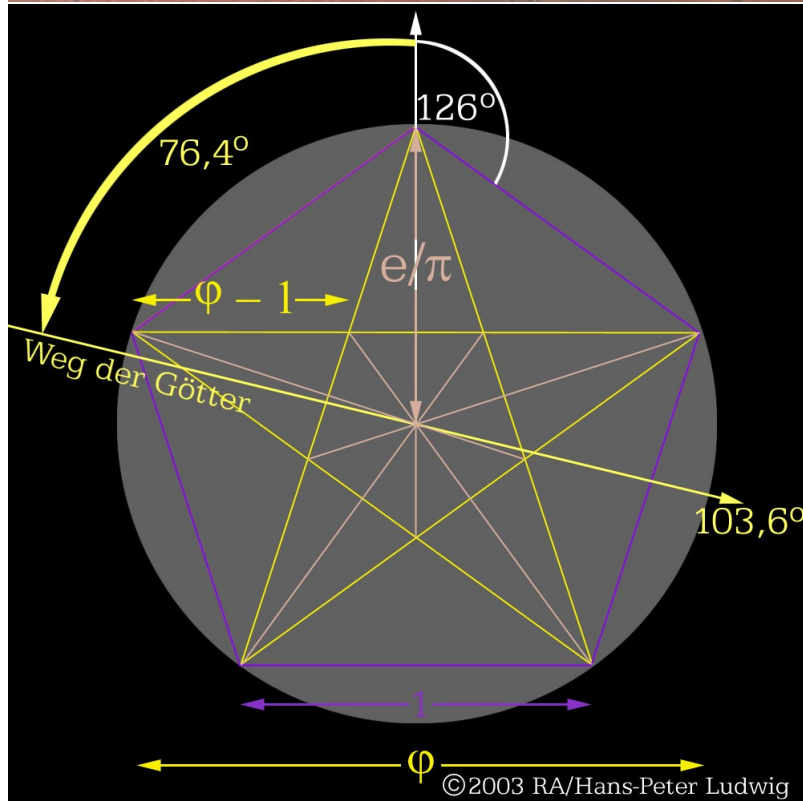


Fig.19: World Exclusive: "The Gizaφ Pentagram and the Way of the Gods" – Author

In order to correctly align the Giza pentagram according to the "Path of the Gods", we have to turn it in the direction of the middle pyramid, i.e. west clockwise by 76.4 degrees ($180 - 103.6 = 76.4$). Thus, the pentagram angle of 126 degrees becomes a "Cydonia" angle of 49.6° ($126 - 76.4 = 49.6$)!

For a cross-check: from the radius e/π of the soul circle with its radians, the soul angle 49.6° actually arises and likewise also through the pentagram rotation according to the "Way of the Gods"! The radius and radian of the soul circle e/π thus confirm each other and manifest themselves in the special angle of the "Way of the Gods" of 103.6 degrees and in its total length of $2 e/\pi$. And this via a pentagram star, whose "golden ratio" corresponds $1/\phi$ exactly to the base length of the Great Pyramid and is completely framed by both the three pyramids and the valley temple! It is certainly anything but a coincidence that due to the displacement and rotation of the pentagram using the "Way of the Gods", the northern and western pentagram vertices meet the base edges of the two large pyramids exactly, while the pentagram circle with its radius e/π is bounded by the northern baseline of the small pyramid of Isis. We remember: at the starting position of the pentagram, it was still the southern baseline, which at the same time represented the base of the pentagram.

Once again in brief: The positions and dimensions of all three pyramids lead us to a Giza pentagram, which is to be aligned according to the "Way of the Gods", so that the soul circle diameter $2 e/\pi$ corresponds to the exact distance between the Valley Temple and the Osiris Pyramid and a soul angle of 49.6° is created by the alignment according to the angle of the "Way of the Gods". However, this angle of 49.6° is also calculated exactly as a radian of the soul radius itself of exactly e/π .

In other words: The meaning and function of the "Way of the Gods" - the path from the Valley Temple (Granite Temple) to the Pyramid of Osiris (Pyramid of "Chephren") - is mathematically and

geometrically uniquely proven by its special angle and length: it is the soul path of mankind, as I remembered it on 15.5.2001 - i.e. two years ago:

"Giza – Ro Setau – is this place where heaven and earth are one, and it is our truthfulness, for it is we: Ra and Thoth, the builders. For thousands of years, Giza has been this mirror of heaven, the mirror of the afterlife, the mirror of the human soul on earth. The temple of our soul ceremonies has always been the temple of love, built of rose granite. Thus, at the end of our ceremony, the soul made its way from the "Temple of Love" to the "Temple of the Resurrection" – on the "Way of the Gods" up to the Pyramid of Osiris, just as Osiris is the god of the afterlife, of resurrection, and just as his wife Isis is the goddess of love. ..." ["THE SECRET OF YOUR LIFE – End and Beginning – RO SETAU", 2001, author].

This also comprehensively deciphers the architectural plan of Giza and its significance for humanity: the mirror of heaven, the mirror of the afterlife, the mirror of the human soul on earth – Giza is the "scales of the world"! If you want to reach paradise, you have to know the way there, at least guess it, and also be prepared to walk it. "Go your own way!" could take on a true meaning with the opening of the stargate, with the "Hall of Knowledge" and be another significant leap in consciousness in the enlightenment and further development of the whole of humanity. "If I know where I come from, then I also know who I am and where I really want to go!" Or to say it freely according to Tolkien in "The Lord of the Rings": A single person alone is enough to change the whole world!

The geometric connection between the Giza Plateau in Egypt, the stone circle in Stonehenge and the Cydonia region on Mars shows **with e/π and 49.6°** a blueprint that is as all-encompassing as the human soul itself.

"Ro Setau and the Temple of Love, Egypt, the center of the world. The center of man is his heart. Thus, Ro Setau is the heart of humanity, the place where heaven and earth are one. The mirror of the human soul on earth. Here the circle closes: look at your soul and you understand the secret of your life." ["THE SECRET OF YOUR LIFE – ABOUT THIS BOOK"].